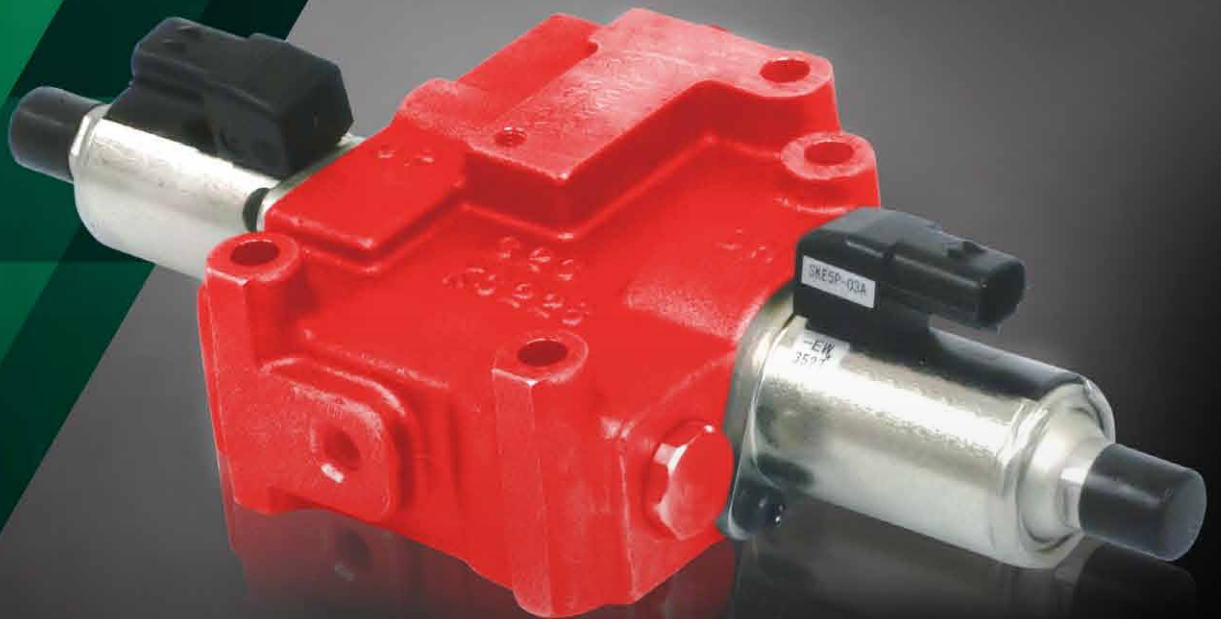


ELECTRO-PROPORTIONAL  
SELF LEVELLING CONTROL VALVE

# KPES

## series

The KPES series is ideally suited for use in self levelling control of farm implements of tractors and combines. This valve ensures smooth motion of an implement by means of proportional solenoid control.



# KPES series

## ADVANTAGES

### Superb Controllability

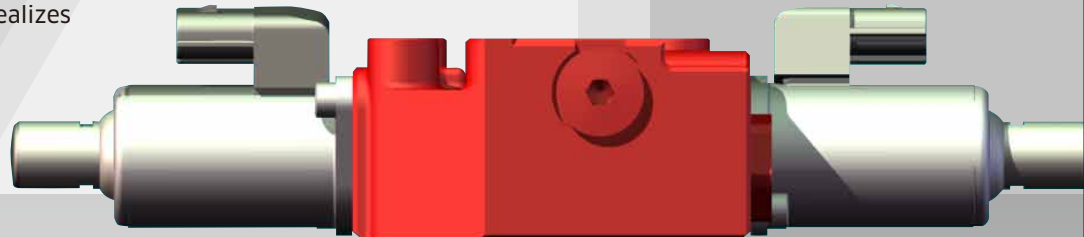
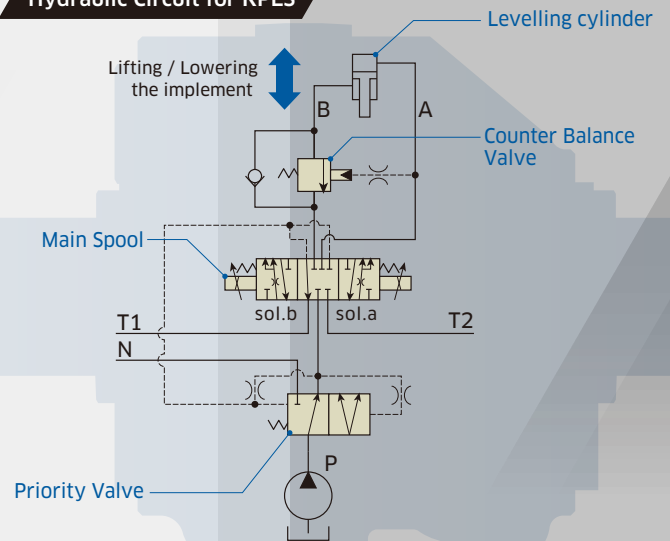
KPES valve controls implement inclination and keeps a farm implement level by means of proportional solenoid control with the integrated pressure compensating function.

The integrated counter balance valve with minimal oil leakage enables to keep an implement in position.

### Compact Design

Direct solenoid-operated spool valve realizes size and weight reduction.

#### Hydraulic Circuit for KPES

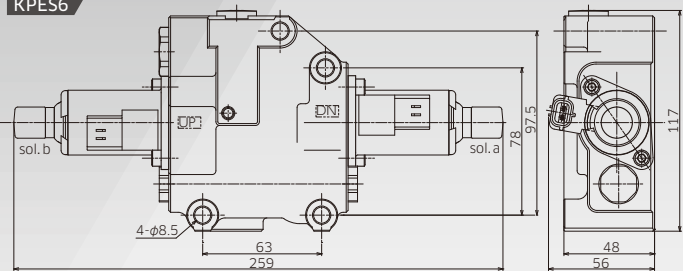


## DIMENSIONS

### Installation Dimensions

KPES6

Unit: mm



## LINEUP



Model		KPES6
Max Pressure [MPa]		17.2
Rated Flow [L/min]	P port	70
	Lowering & Lifting	10

## CONTROL OPTIONS

### •Electronic Proportional Control

Rated Current: 1.6 A Coil Resistance: 3.3 Ω (at 20 °C)

Specifications are subject to change without notice.

### Kawasaki Heavy Industries, Ltd.

Precision Machinery Company

<http://www.khi.co.jp/kpm/>

#### Tokyo Head Office

1-14-5, Kaigan, Minato-ku, Tokyo 105-8315, Japan  
Tel: +81-3-3435-6862 Fax: +81-3-3435-2023

#### Kobe Head Office

Kobe Crystal Tower, 1-3 Higashikawasaki-cho 1-chome, Chuo-ku, Kobe 650-8680, Japan  
Tel: +81-78-360-8607 Fax: +81-78-360-8609

#### Nishi-kobe Works

234, Matsumoto, Hasetani-cho, Nishi-ku, Kobe 651-2239, Japan  
Tel: +81-78-991-1160 Fax: +81-78-991-3186

### Kawasaki Precision Machinery (UK) Ltd.

Ernesettle Lane, Ernesettle, Plymouth, Devon, PL5 2SA United Kingdom  
Tel: +44-1752-364394 Fax: +44-1752-364816  
<http://www.kpm-eu.com>

### Kawasaki Precision Machinery (U.S.A.), Inc.

3838 Broadmoor Avenue S.E. Grand Rapids, Michigan 49512, U.S.A.  
Tel: +1-616-975-3100 Fax: +1-616-975-3103  
<http://www.kpm-usa.com>

### Kawasaki Precision Machinery Trading (Shanghai) Co., Ltd.

17th Floor (Room 1701), The Headquarters Building, No168, XiZang Road (M), Huangpu District, Shanghai, 200001, China  
Tel: +86-21-3366-3800 Fax: +86-21-3366-3808

### Flutek, Ltd.

98 GIL 6, Gongdan-Ro, Seongsan-Ku, Changwon-Si, Kyungnam, 641-370, Korea  
Tel: +82-55-210-5900 Fax: +82-55-286-5557

### Wipro Kawasaki Precision Machinery Private Limited

No. 15, Sy. No. 35 & 37, Kumbalgodu Industrial Area, Kumbalgodu Village, Kengeri Hobli, Bangalore, -560074, India



QR code  
Precision Machinery  
Company Website