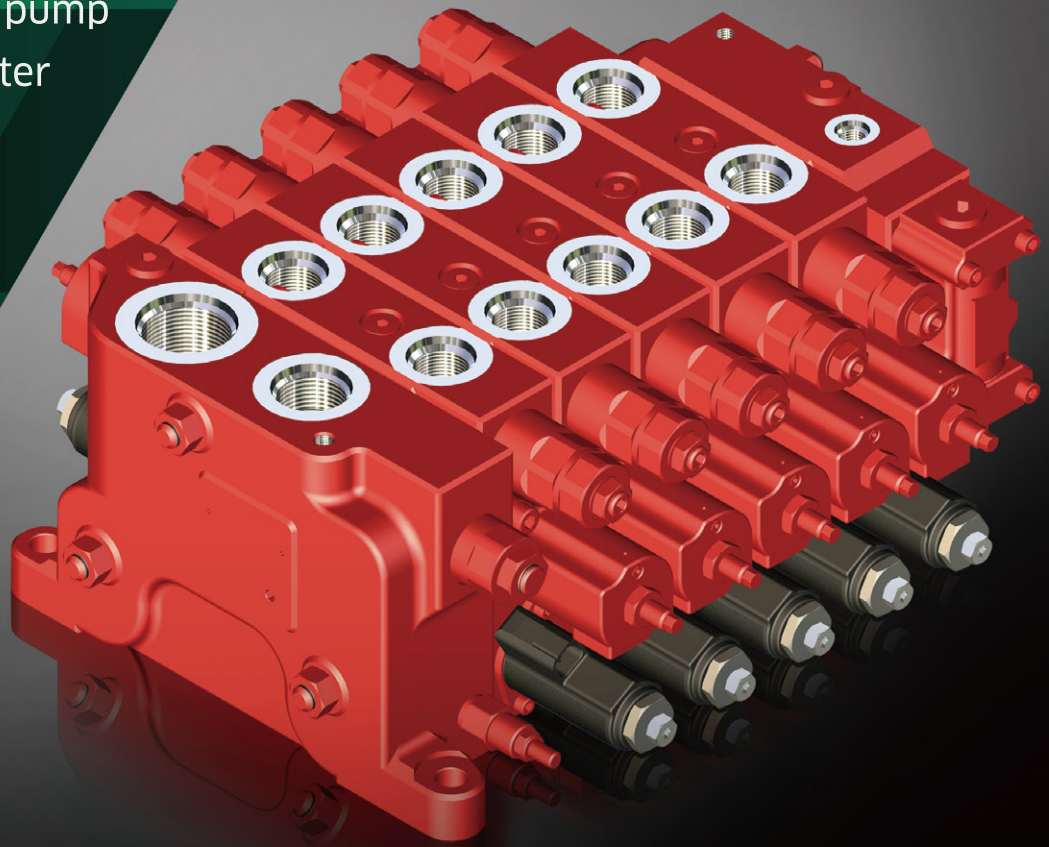


LOAD SENSING
CONTROL VALVE

KLSV series

The KLSV valve is designed for use in construction and industrial equipment with load sensing control system. The KLSV valve can be combined with a variable displacement pump to realize a closed-center load sensing system.



KLSV series

ADVANTAGES

High Efficiency

Each spool section is capable of controlling flow independent of the variations in load pressure.

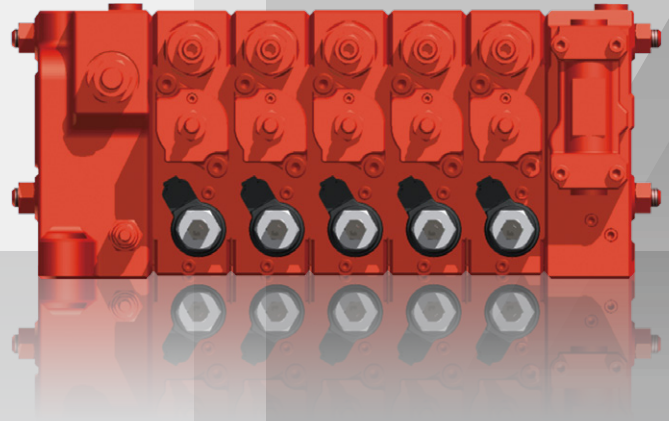
Also, the KLSV is equipped with an anti-saturation function which maintains a constant flow rate among each section in the simultaneous operation of multiple functions.

Energy Saving

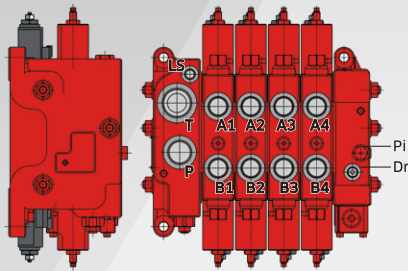
Optimal design of flow passage ensures low pressure loss.

High Pressure

The KLSV high pressure valve enables a more efficient and compact load-sensing system.



PORT SIZE



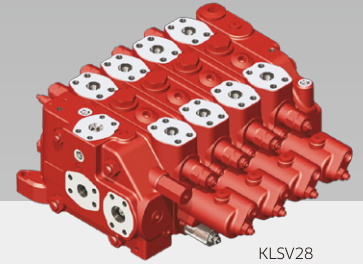
Code	Port	KLSV18	KLSV22 ^(*)	KLSV28
P	Pump port	1-5/16-12UN-2B SAE J1926-1 ^(**)	G1 ^(**)	SAE 1" 6000PSI SAE 1" 6000PSI (x2)
T	Tank port	1-5/8-12UN-2B SAE J1926-1 ^(**)	G1-1/4 ^(**)	SAE 1-1/4" 3000PSI SAE 1-1/4" 3000PSI
A#/B#	Work port	1-1/16-12UN-2B SAE J1926-1 ^(**)	G3/4 ^(**)	SAE 3/4" 6000PSI SAE 1" 6000PSI
Dr	Drain port	9/16-18UNF-2B SAE J1926-1 ^(**)	G1/4 ^(**)	G1/4 ^(**)
LS	Load Sense port	9/16-18UNF-2B SAE J1926-1 ^(**)	G1/4 ^(**)	G1/4 ^(**)
Pi	External pilot supply port	9/16-18UNF-2B SAE J1926-1 ^(**)	G1/4 ^(**)	G1/4 ^(**)
Pa#/Pb#	Hydraulic pilot supply port	9/16-18UNF-2B SAE J1926-1 ^(**)	G1/4 ^(**)	G3/8 ^(**) G3/8 ^(**)

(*) Under development (**) O-ring boss

LINEUP



KLSV18



KLSV28

Model	KLSV18	KLSV22 ^(*)	KLSV28
Max. Pressure[MPa]	40	35	35
Max. Flow [L/min]	P port	240	350
	Spool Section at ΔP=1.5MPa	180	300
Max. Number of Sections	9	10	7

(*) Under development

CONTROL OPTIONS

- Electronic Proportional Control
Rated Flow 0.7A for DC 24V/1.6A for DC 12V
- Pilot Operated Control (Hydraulic)

Specifications are subject to change without notice.

Kawasaki Heavy Industries, Ltd.

Precision Machinery Company
<http://www.khi.co.jp/kpm/>

Tokyo Head Office

1-14-5, Kaigan, Minato-ku, Tokyo 105-8315, Japan
Tel: +81-3-3435-6862 Fax: +81-3-3435-2023

Kobe Head Office

Kobe Crystal Tower, 1-3 Higashikawasaki-cho 1-chome, Chuo-ku, Kobe 650-8680, Japan
Tel: +81-78-360-8607 Fax: +81-78-360-8609

Nishi-kobe Works

234, Matsumoto, Hasetani-cho, Nishi-ku, Kobe 651-2239, Japan
Tel: +81-78-991-1160 Fax: +81-78-991-3186

Kawasaki Precision Machinery (UK) Ltd.

Ernesettle Lane, Ernesettle, Plymouth, Devon, PL5 2SA United Kingdom
Tel: +44-1752-364394 Fax: +44-1752-364816
<http://www.kpm-eu.com>

Kawasaki Precision Machinery (U.S.A.), Inc.

3838 Broadmoor Avenue S.E. Grand Rapids, Michigan 49512, U.S.A.
Tel: +1-616-975-3100 Fax: +1-616-975-3103
<http://www.kpm-usa.com>

Kawasaki Precision Machinery Trading (Shanghai) Co., Ltd.

17th Floor (Room 1701), The Headquarters Building, No168, XiZang Road (M), Huangpu District, Shanghai, 200001, China
Tel: +86-21-3366-3800 Fax: +86-21-3366-3808

Flutek, Ltd.

98 Gil 6, Gongdan-Ro, Seongsan-Ku, Changwon-Si, Kyungnam, 641-370, Korea
Tel: +82-55-210-5900 Fax: +82-55-286-5557

Wipro Kawasaki Precision Machinery Private Limited

No. 15, Sy. No. 35 & 37, Kumbalgodu Industrial Area, Kumbalgodu Village, Kengeri Hobli, Bangalore, -560074, India



QR code
Precision Machinery
Company Website